

# ESCAP's Experience with GCF Projects

**Daisuke Maruichi**  
Economic Affairs Officer, ESCAP

---

**GCF Content Meeting**  
**28th October 2024**  
**Tsukuba, Japan**

# A Twin-track strategy: EW4All and Transformative Adaptation

**Early Warnings  
for All**



1

Develop early warning systems for all at the regional level, Develop and implement a regional strategy in support of the global and country-level implementation of the four pillars of multi-hazard early warning systems

2

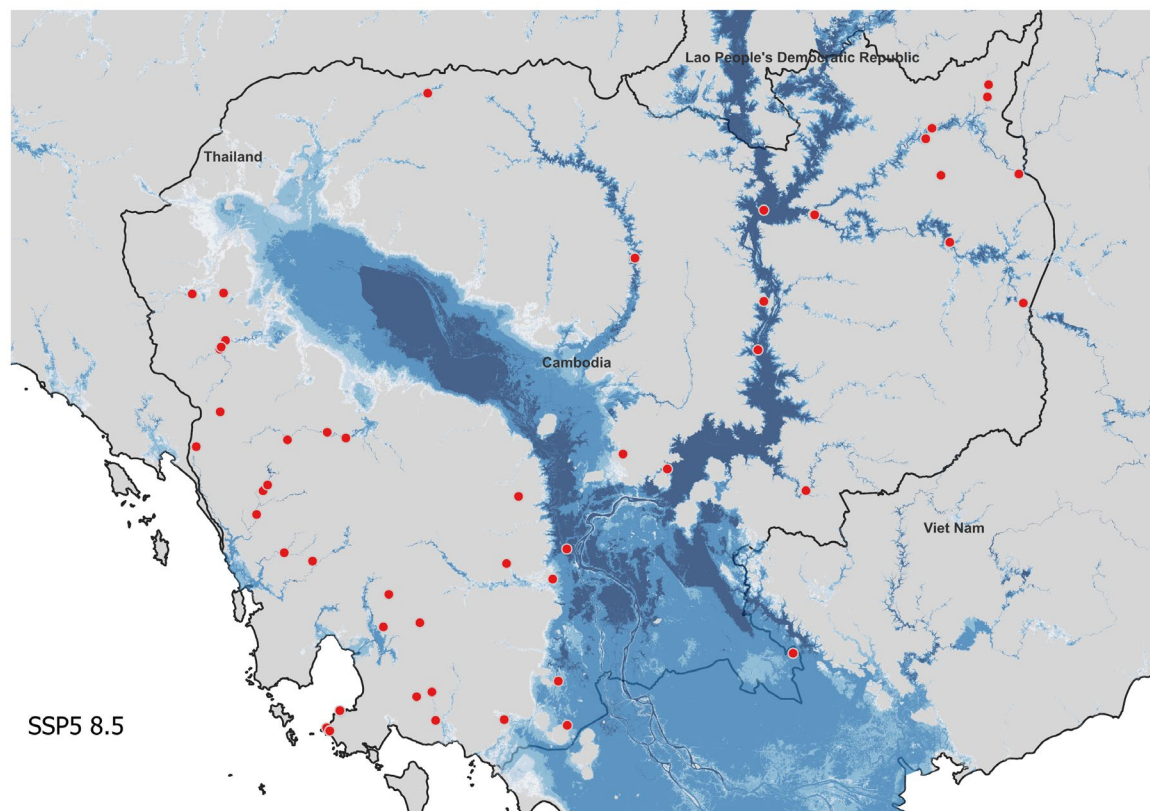
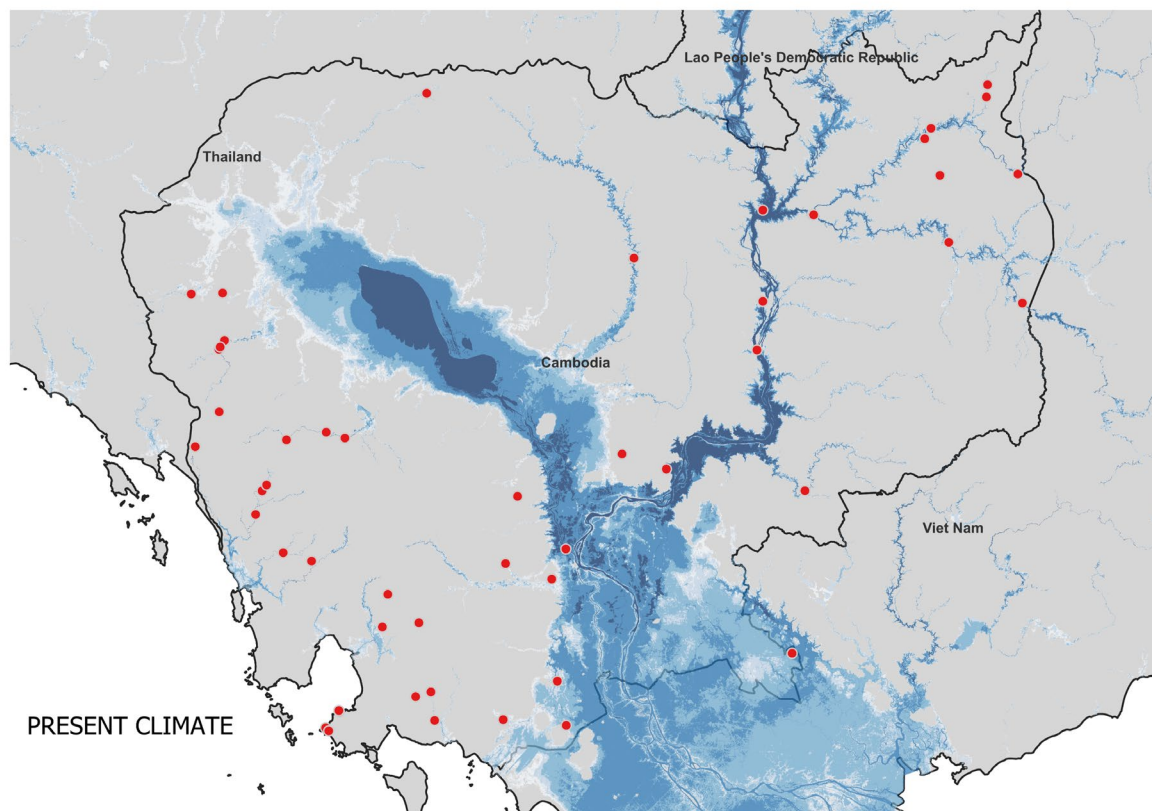
Facilitate cooperation and policy dialogue on transformative adaptation, which protects lives, livelihoods and food, energy and other critical systems, scaling up of innovations to address transboundary hazards.

3

Continue data-driven analysis available in the Risk and Resilience Portal to support transformative adaptation and requests the secretariat to deepen its analytical research, knowledge-sharing and capacity development

# Cambodia: Climate projection of hazards

Estimate the impacts of floods on power plants under different climate scenarios (at 100m resolution)



# Nepal: Impact based forecasting (IBF) using seasonal forecast

## Seasonal Outlook for Precipitation

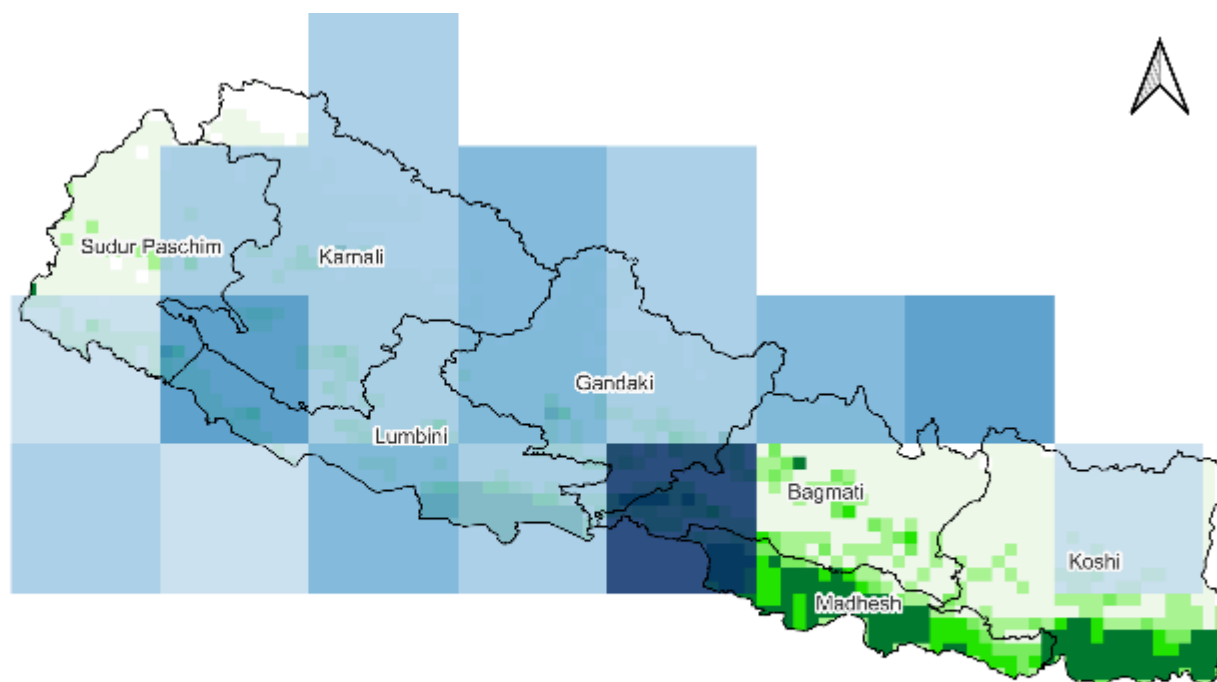
### Above Normal

- Lightest Blue: Above Normal 35 - 40%
- Light Blue: Above Normal 0 - 50%
- Medium Blue: Above Normal 50 - 60%
- Dark Blue: Above Normal 60 - 70%
- Darkest Blue: Above Normal 70 - 80%

### Agricultural Production Quantity (metric ton)

- Lightest Green: 2.2 - 10000.0
- Light Green: 10000.1 - 20000.0
- Medium Green: 20000.1 - 30000.0
- Dark Green: 30000.1 - 40000.0
- Darkest Green: 40000.0 - 140000

0 75 150 km



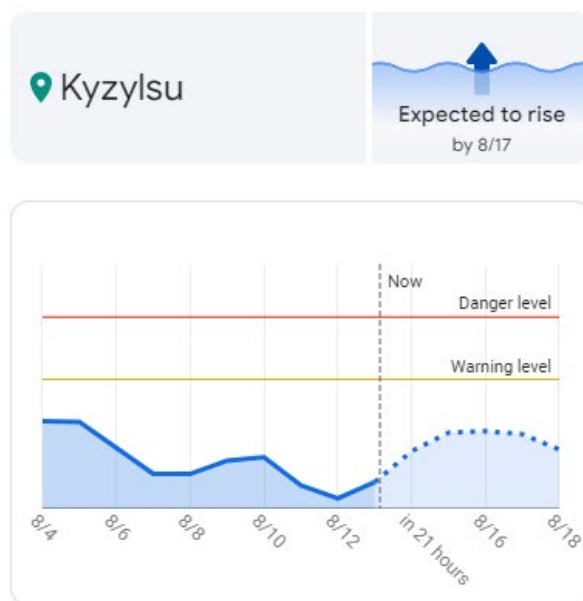
Sources: SASCOF-28 Seasonal Outlook Precipitation Data for the 2024 Southwest Monsoon Season (June – September); Global Spatially-Disaggregated Crop Production Statistics Data of 2010 (MapSPAM) V2r0 2020; and UN Geospatial.  
Disclaimer: The boundaries and names shown and the designations used on this map do not imply official endorsement or acceptance by the United Nations.

ESCAP's impact based forecasting tool translates **seasonal forecasting data** from climate outlook forum into impacts on exposures (agriculture, infrastructure, populations, etc.).

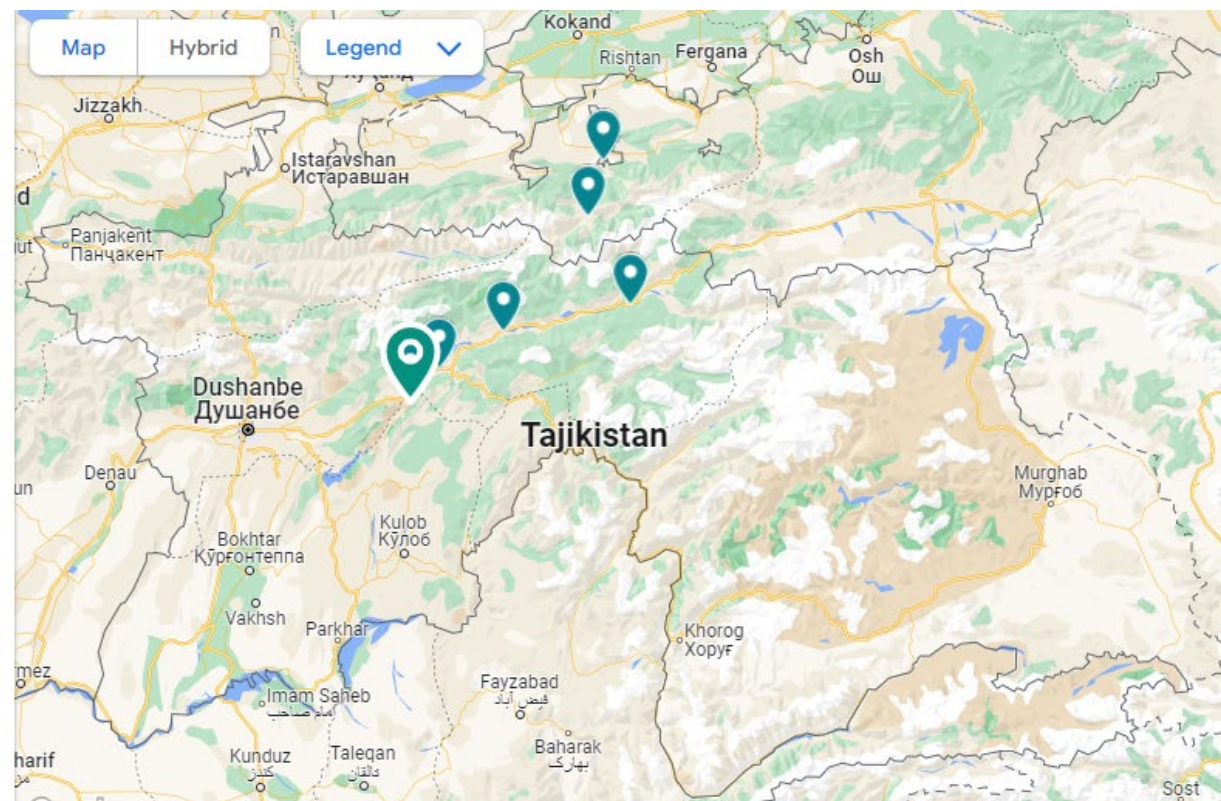
In Nepal, the seasonal precipitation outlook for the summer monsoon period (Jun-Sep 2024) indicated that an estimated **15.32 million metric tons (82.6%)** of agricultural production was likely to be exposed to above normal precipitation.

# Tajikistan: Impact based forecasting (IBF) using Flood Hub

In collaboration with [Google's Flood Hub](#) platform which uses AI models for flood forecasting, ESCAP can also provide impact based forecasting tool that uses **5-day flood forecast** to estimate the impact on exposures (agriculture, infrastructure, population, etc.)



Flood conditions are approximate and are for informational purposes only. Check official sources for more information.  
[Learn more about the models and data sources](#)



# Timor-Leste: National Climate Outlook Forum through ESCAP Trust Fund

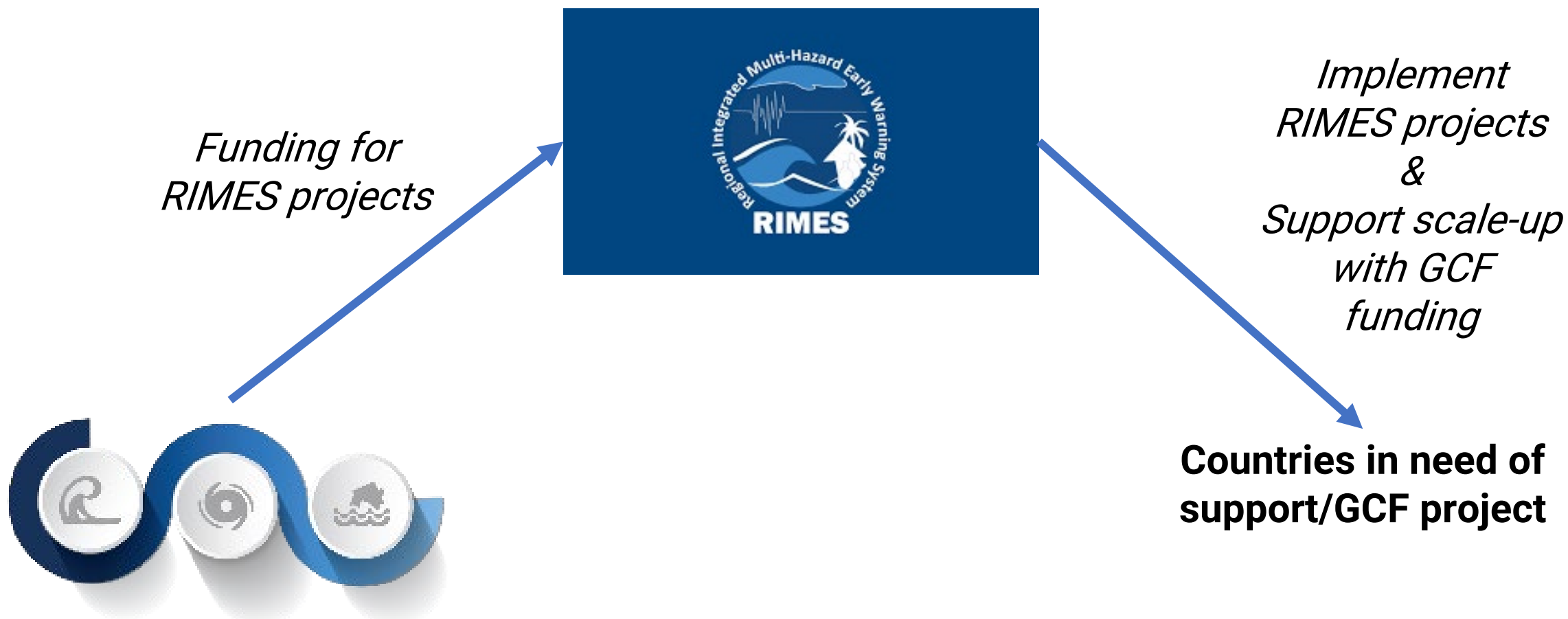


In Timor Leste, ESCAP Trust Fund provided funding for RIMES project to provide support on capacity building for impact-based forecasting and national climate outlook forum



Once the buy-in and ownership was received at the national level, **RIMES then included these activities in the GCF proposal and phased out Trust Fund support in this area**

# ESCAP's Contributions to GCF Projects through RIMES





# ESCAP

Economic and Social Commission  
for Asia and the Pacific

# Thank you

**Follow us:**

   unescap

  unitednationsescap

 united-nations-escap

 unescap.org